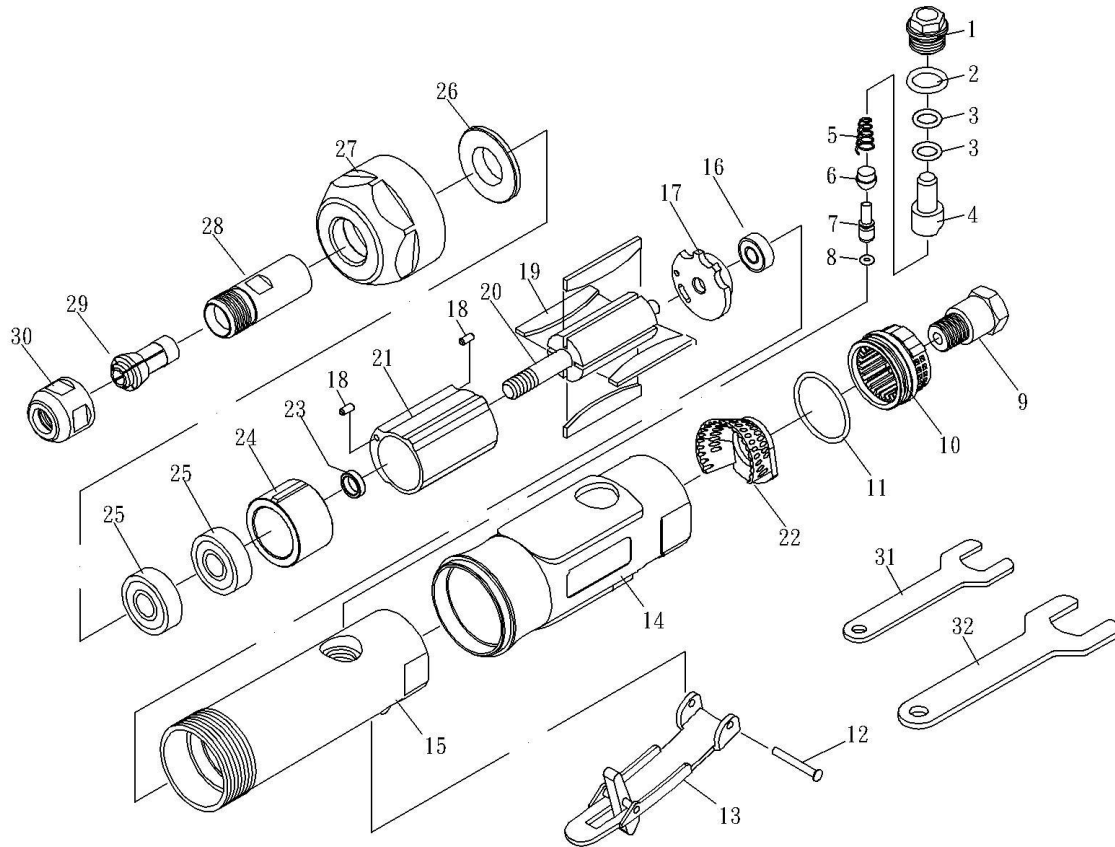


ZP313 Air Die Grinder



ZP313 Air Die Grinder

TECHNICAL DATA

Collet Size	inch(mm)	1/4(6)
Net Weight	lbs(kgs)	1.3(0.6)
Length	in. (mm)	7(178)
RPM	RPM	22000
Air Inlet Size	inch-NPT/PT	1/4
Min. Hose Size	inch(mm)	3/8(10)
Avg. Air Consumption	cfm	3.7

PARTS LIST

Index	Part #	Description	Index	Part #	Description
1	ZP313-01	SCREW	17	ZP313-17	REAR PLATE
2	ZP313-02	O-RING(P12)	18	ZP313-18	PIN(2)
3	ZP313-03	O-RING(P8)(2)	19	ZP313-19	ROTOR BLADE(4)
4	ZP313-04	AIR REGULATOR	20	ZP313-20	ROTOR
5	ZP313-05	SPRING	21	ZP313-21	CYLINDER
6	ZP313-06	VALVE STEM BUSHING	22	ZP313-22	CONE MUFFLER
7	ZP313-07	VALVE STEM	23	ZP313-23	BEARING SPACER
8	ZP313-08	O-RING(3.5*1.4)	24	ZP313-24	FRONT PLATE
9	ZP313-09	AIR INLET	25	ZP313-25	BEARING(608ZZ)(2)
10	ZP313-10	EXHAUST SLEEVE	26	ZP313-26	WASHER
11	ZP313-11	O-RING(26.7*1.78)	27	ZP313-27	CLAMP NUT
12	ZP313-12	SPRING PIN	28	ZP313-28	SPINDLE
13	ZP313-13	LEVER	29	ZP313-29	COLLET
14	ZP313-14	PROTECTING RUBBER	30	ZP313-30	COLLET NUT
15	ZP313-15	HOUSING	31	ZP313-31	STOP SPANNER (14MM)
16	ZP313-16	BEARING(696ZZ)	32	ZP313-32	STOP SPANNER (19MM)